

## Moly-Drop 960

### Easy identifying of stainless steel grades

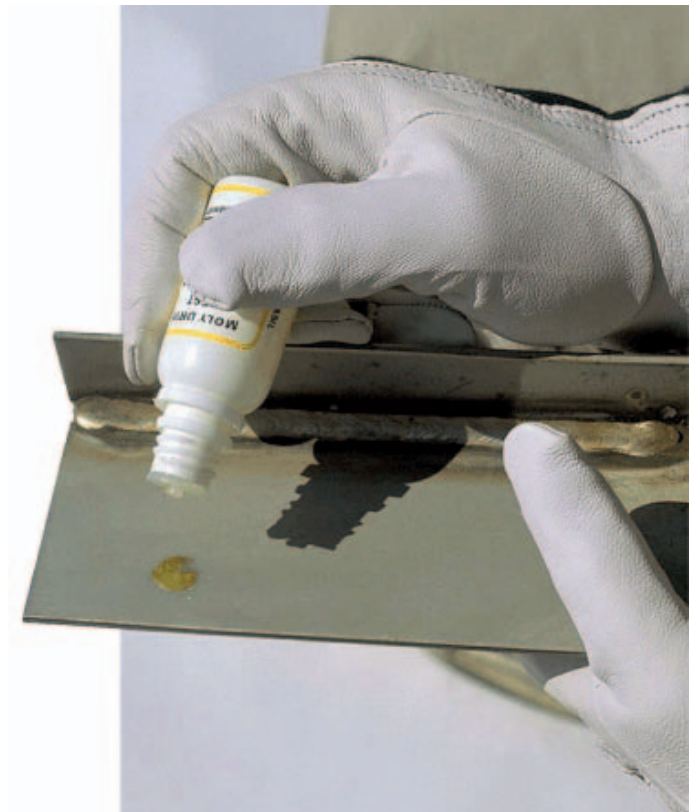
Avesta Moly-Drop 960 is an easy to use chemical test that helps differentiate 304 grade stainless steel from 316 grade.

### Standard applications

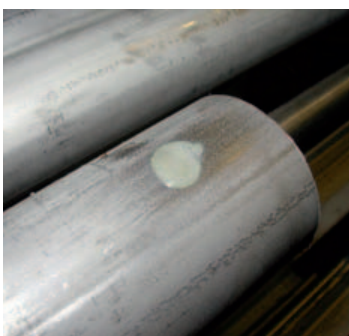
With this simple chemical test you can check if your stock piece or scrap of stainless steel contains molybdenum. This makes it possible to differ the steel grades 304 and 316. The test will identify the grade within 5–10 minutes through a colour change.

### Features

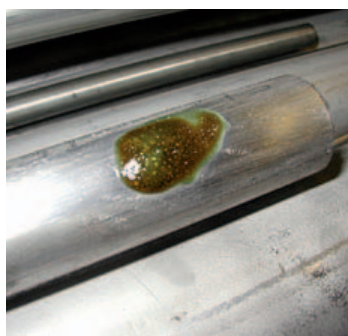
- Can be used on stainless steel 300 series material to test presence of molybdenum and thereby differentiate grade 304 (no molybdenum) from 316 (with molybdenum).



Easy identifying of stainless steel grade with Avesta Moly-Drop 960.



Testing 304 (EN 1.4301)



Testing 316 (EN 1.4436)

## Instructions for use



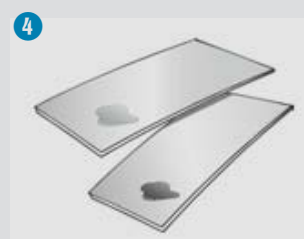
1. Shake the bottle well before use.



2. Apply 1-2 drops and wait 5-10 min.



3. Rinse thoroughly with water.



4. No colour change = grade 304.  
Colour change to dark brown = grade 316.

## Packaging

**Avesta Moly-Drop 960** is supplied in 30 ml bottles (≈ 200 tests).

## Storage

**Avesta Moly-Drop 960** should be stored indoors at room temperature. Bottles must be kept properly closed, in an up-right position and inaccessible to unauthorized persons.


## Worker safety

The product is corrosive and proper protective clothing should be used. In general, users should wear acid-resistant gloves and eye protection.


Special conditions may apply from one country to another. Consult our website where updated Safety Data Sheets can be found.

## Other information


For more information, please visit our website: [www.avestafinishing.com](http://www.avestafinishing.com), where you can find Safety Data Sheets and other useful information.




ISO 9001




NATIONAL ACCREDITATION OF CERTIFICATION BODIES



ISO 14001



NATIONAL ACCREDITATION OF CERTIFICATION BODIES



**Responsible Care®**  
Good Chemistry at Work

Information given in this brochure may be subject to alteration without notice. Care has been taken to ensure that the contents of this publication are accurate, but voestalpine Böhler Welding Nordic AB and its subsidiary companies do not accept responsibility for errors or for information which is found to be misleading. Suggestions for or descriptions of the end use or application of products or methods of working are for information only and the company and its subsidiaries accept no liability in respect thereof. Before using products supplied or manufactured by the company the customer should satisfy himself of their suitability.

**voestalpine Böhler Welding Nordic AB**

Lodgatan 14, SE-211 24 Malmö, Sweden

Tel: +46 (0)40 28 83 00

[www.voestalpine.com/welding](http://www.voestalpine.com/welding)

**voestalpine**

ONE STEP AHEAD.